



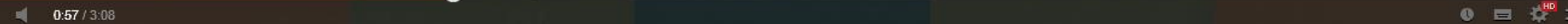
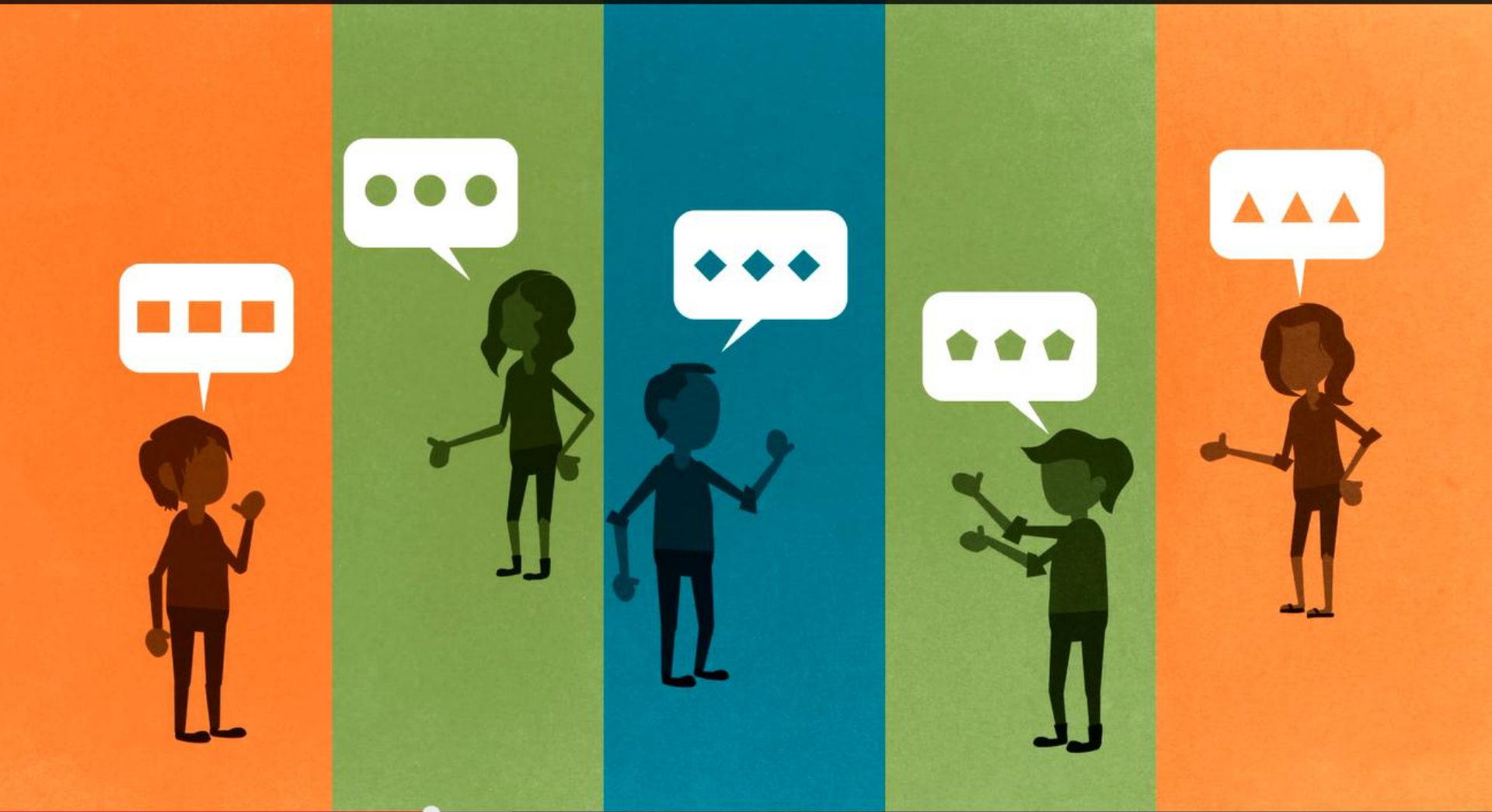
SOCIAL PROGRESS IMPERATIVE: USING METRICS THAT MATTER TO ENGAGE NEW PARTNERS IN DEVELOPMENT

September 18 2014

**SOCIAL
PROGRESS
IMPERATIVE**

SECTORS IN SILOS TRANSFORMED...

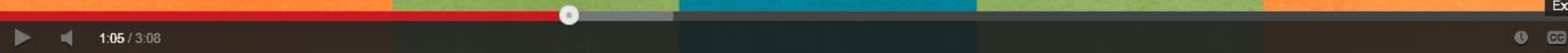
Action Supported by the Social Progress Framework



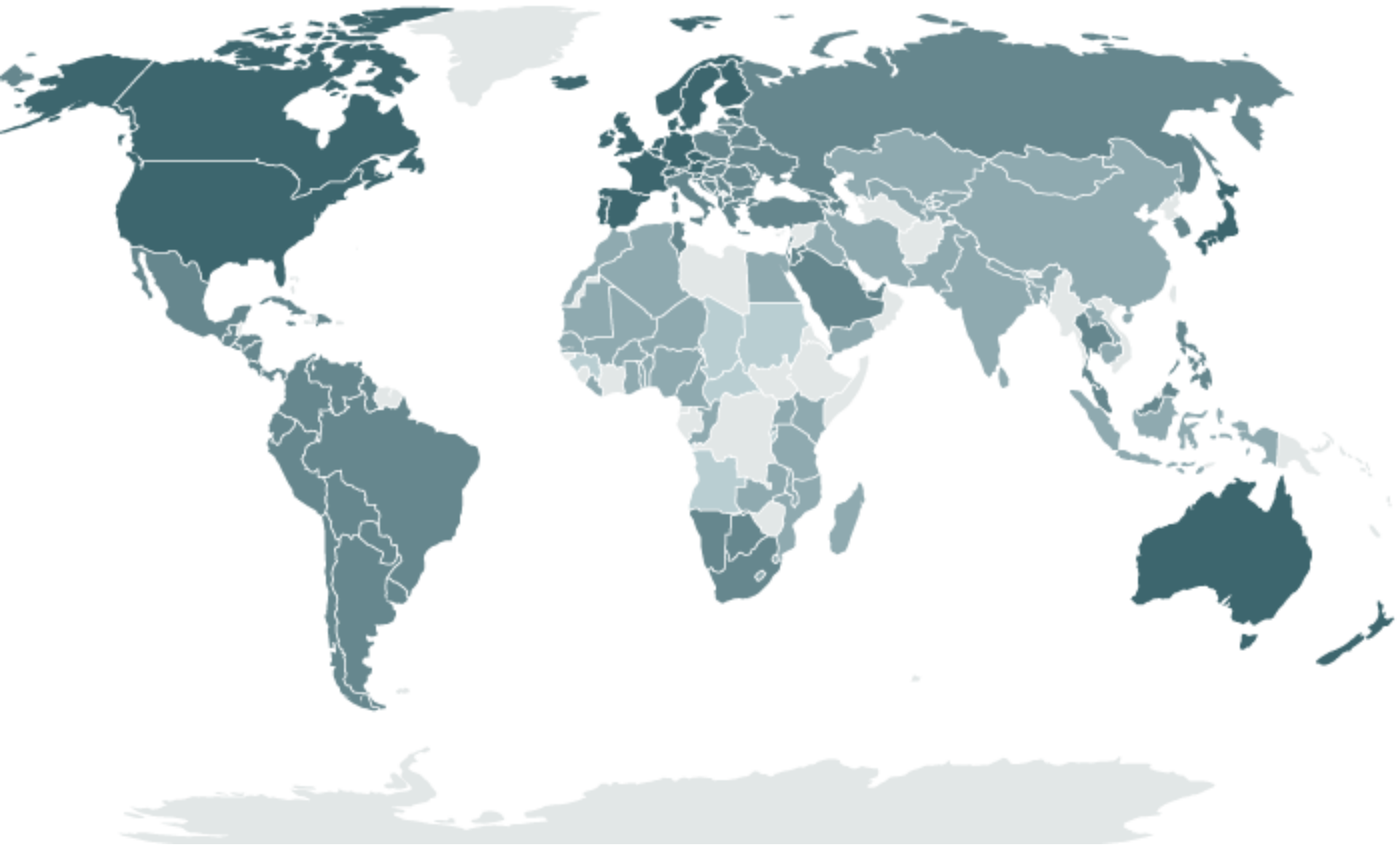
0:57 / 3:08

...WITH A COMMON LANGUAGE

Local Action Supported by the Social Progress Framework



ENGAGING CITIZENS IN RICH AND POOR COUNTRIES ALIKE



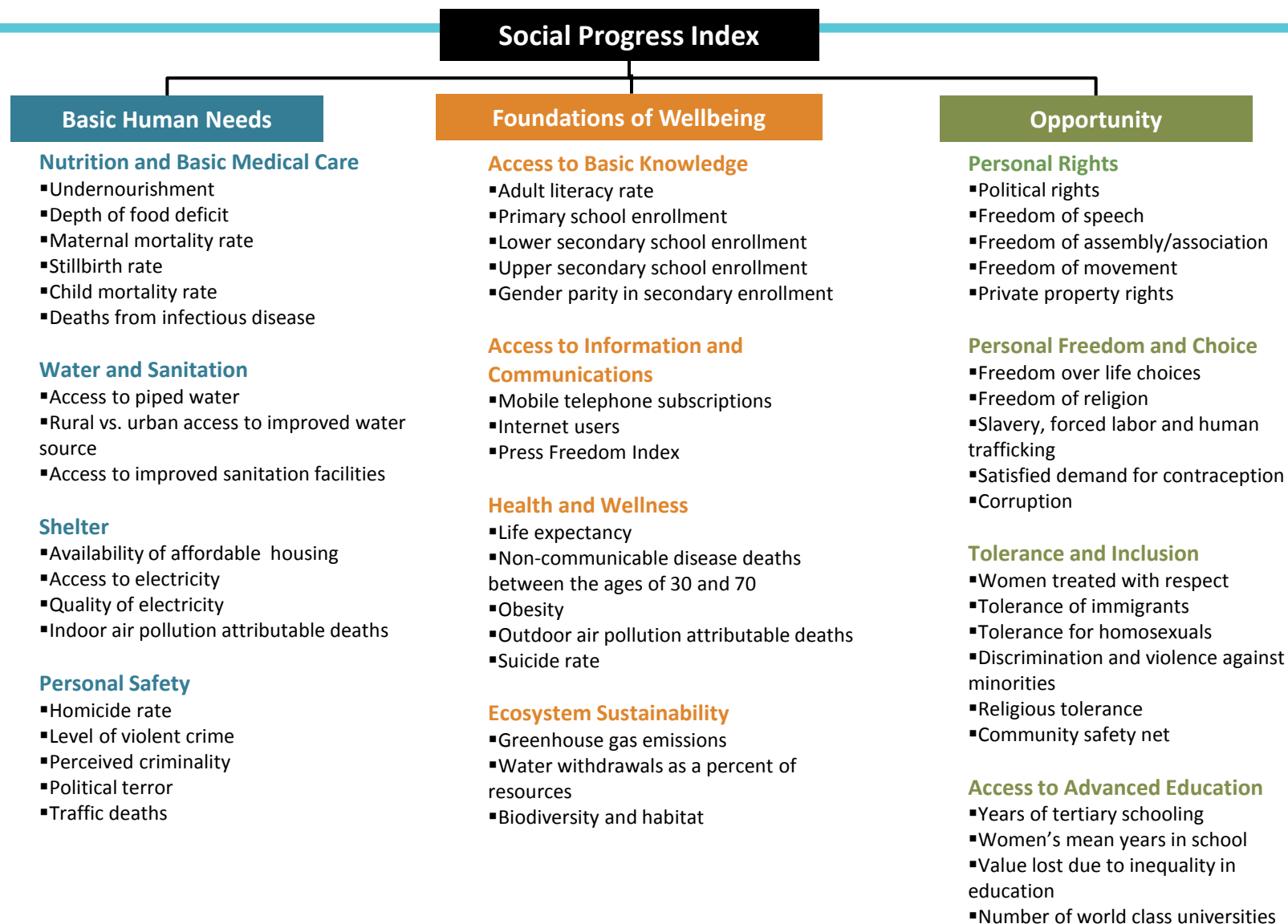
WHAT IS SOCIAL PROGRESS?

Our definition: *Social progress is the capacity of a society to meet the **basic human needs** of its citizens, establish the **building blocks** that allow citizens and communities to enhance and sustain the quality of their lives, and create the **conditions for all individuals to reach their full potential.***

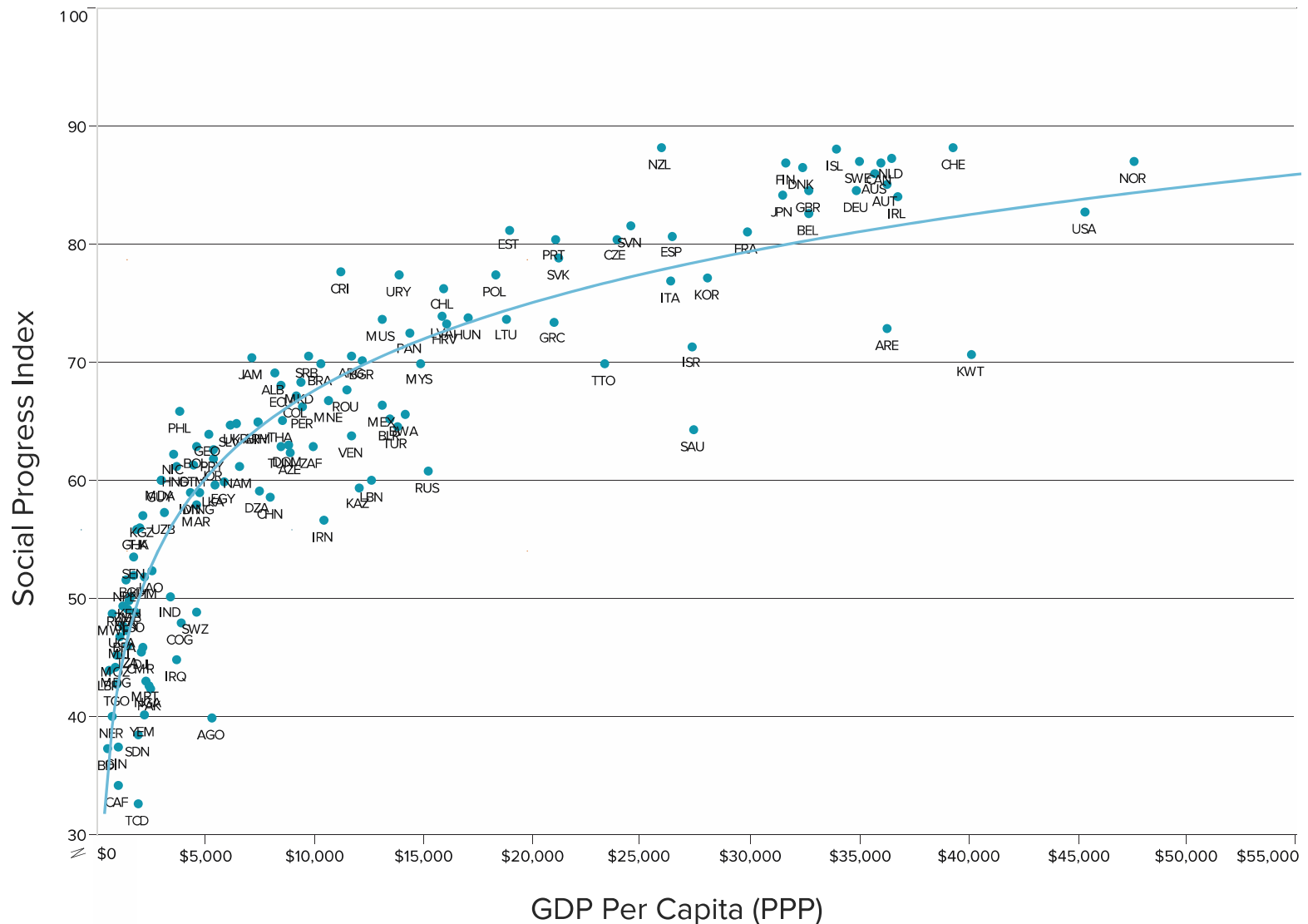
SOCIAL PROGRESS INDEX FRAMEWORK



GLOBAL SOCIAL PROGRESS INDEX – INDICATOR LEVEL 2014



SOCIAL PROGRESS INDEX VS. GDP PER CAPITA (PPP)



SOCIAL PROGRESS INDEX



Index By Component ▾ By Country ▾ Methodology Findings Definitions

SOCIAL PROGRESS INDEX 2014

? Share

MEASURING NATIONAL PROGRESS – To truly advance social progress, we must learn to measure it, comprehensively and rigorously. The Social Progress Index offers a rich framework for measuring the multiple dimensions of social progress, benchmarking success, and catalyzing greater human wellbeing. The 2014 version of the Social Progress Index has improved upon the 2013 ‘beta’ version through generous feedback from many observers. We continue to welcome your use and testing of our data, and feedback to help us continue to improve. [Please watch our short video on the results of the Social Progress Index 2014.](#) [Please find our publications here.](#)



MAP VIEW – ONE ASPECT AT A TIME

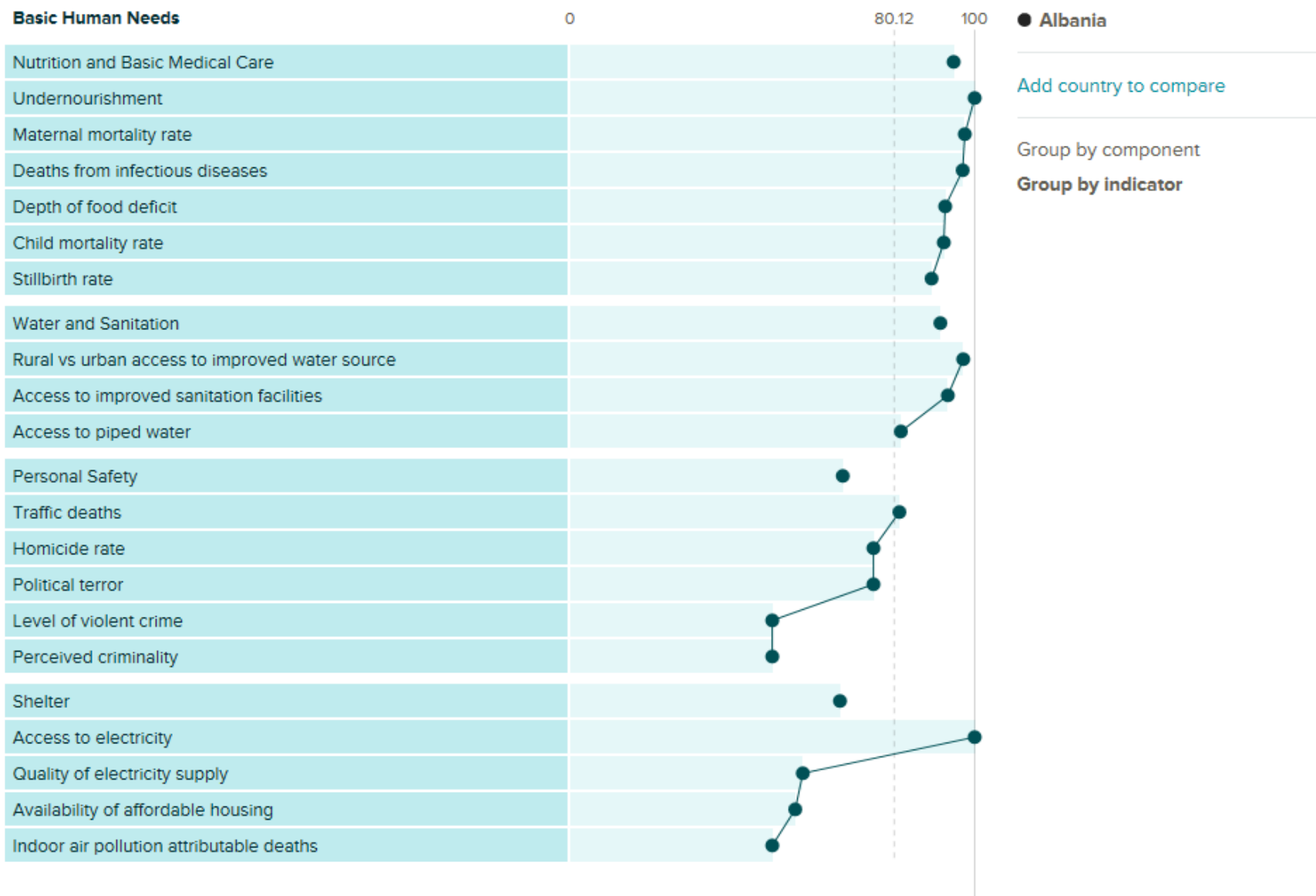


SCORECARD VIEW

Elements are highlighted where this country possesses a **relative weakness** or a **relative strength** compared to countries of similar GDP per capita: China; Tunisia; Ecuador; Thailand; Dominican Republic; Algeria; Azerbaijan; Armenia; Bosnia and Herzegovina; Colombia; Jamaica; Macedonia; Peru; Serbia; Namibia

		Social Progress Index		69.13	
Basic Human Needs		80.12			
Nutrition and Basic Medical Care		94.81			
Undernourishment					
Depth of food deficit					
Maternal mortality rate					
Stillbirth rate					
Child mortality rate					
Deaths from infectious diseases					
Water and Sanitation		91.53			
Access to piped water					
Rural vs urban access to improved water s					
Access to improved sanitation facilities					
Shelter		66.72			
Availability of affordable housing					
Foundations of Wellbeing		73.13			
Access to Basic Knowledge		87.02			
Adult literacy rate					
Primary school enrollment					
Lower secondary school enrollment					
Upper secondary school enrollment					
Gender parity in secondary enrollment					
Access to Information and Communicati		69.18			
Mobile telephone subscriptions					
Internet users					
Press Freedom Index					
Health and Wellness		78.21			
Life expectancy					
Non-communicable disease deaths betwe					
Opportunity		54.14			
Personal Rights		61.55			
Political rights					
Freedom of speech					
Freedom of assembly/association					
Freedom of movement					
Private property rights					
Personal Freedom and Choice		65.97			
Freedom over life choices					
Freedom of religion					
Modern slavery, human trafficking and chil					
Satisfied demand for contraception					
Corruption					
Tolerance and Inclusion		49.47			

COMPONENT OR INDICATOR-LEVEL DATA VISUALIZATION



PERFORMANCE VIEW

Map

Performance

Data Table

<> Embed

↓ Export

Countries

0

Median

100

● Social Progress Index

● Basic Human Needs

● Foundations of Wellbeing

● Opportunity

[Add aspect to compare](#)

Group by country

Group by region

New Zealand

Switzerland

Iceland

Netherlands

Norway

Sweden

Canada

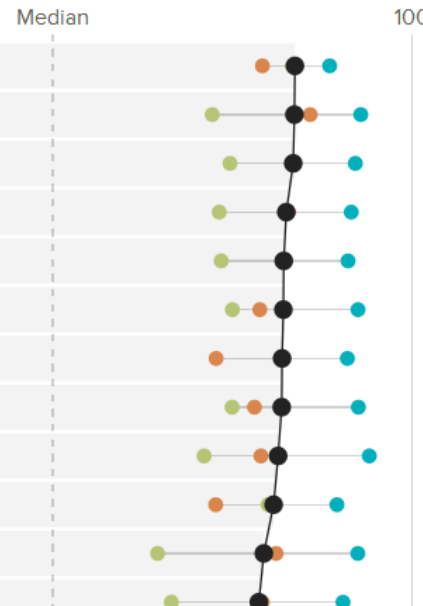
Finland

Denmark

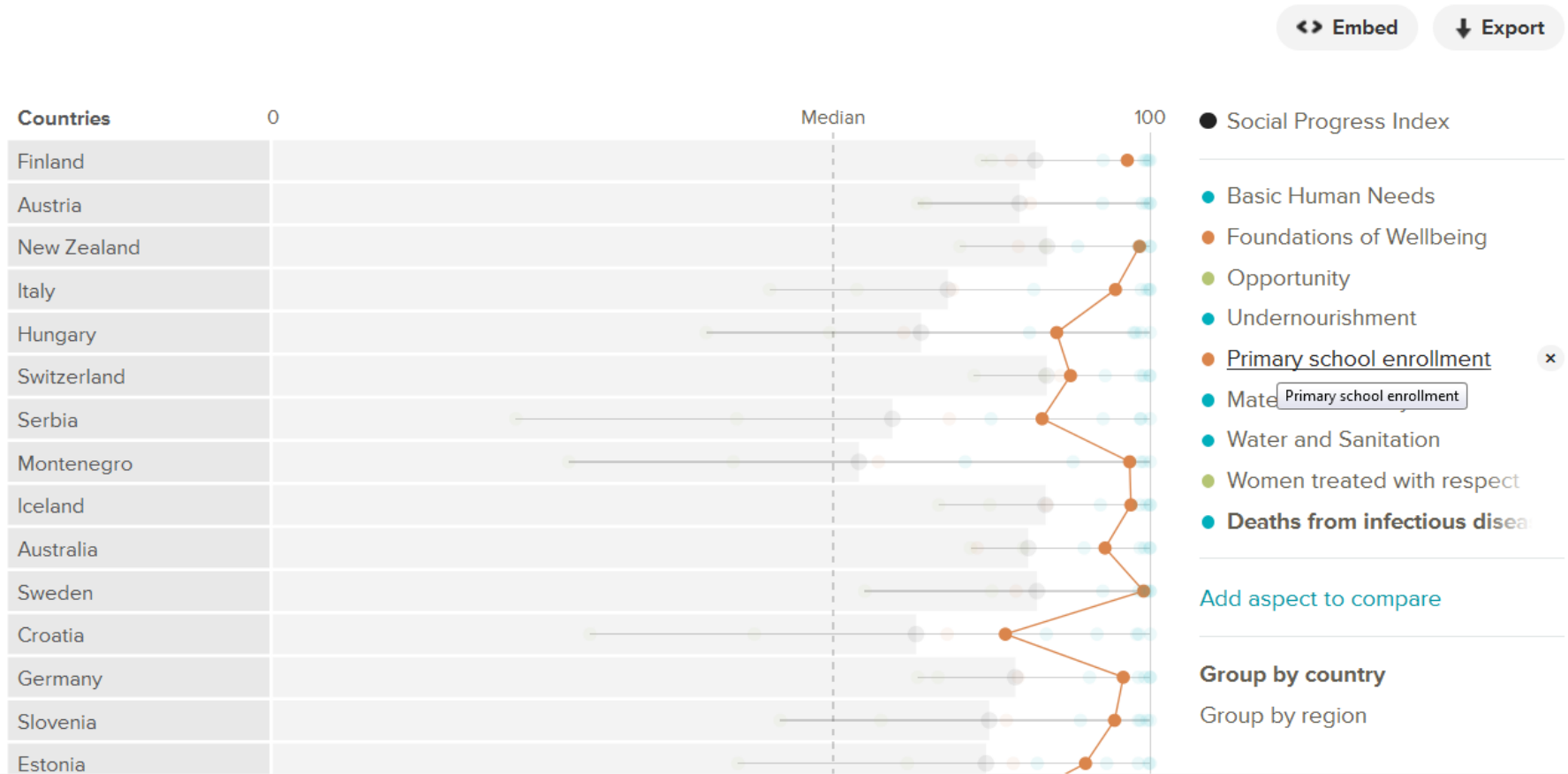
Australia

Austria

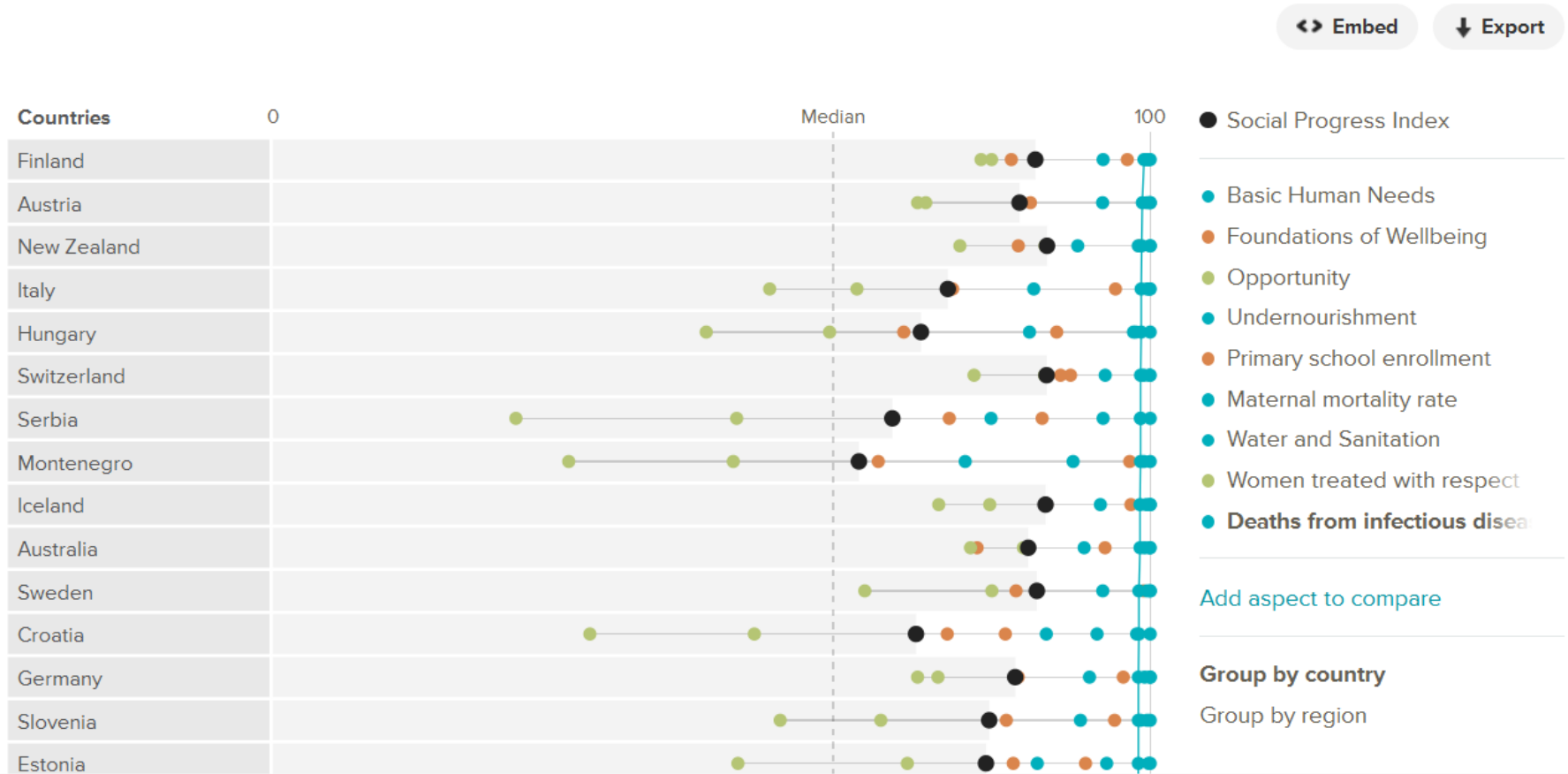
Germany



TREND LINES ON HOVER



MULTIPLE ASPECTS AT ONCE



DATA TABLES

<> Embed

↓ Export

Basic Human Needs

Albania

Nutrition and Basic Medical Care	94.81
Undernourishment	5
Maternal mortality rate	27
Deaths from infectious diseases	46
Depth of food deficit	52
Child mortality rate	16.7
Stillbirth rate	5
Water and Sanitation	91.53
Rural vs urban access to improved water source	1.8
Access to improved sanitation facilities	93.9
Access to piped water	81.8
Personal Safety	67.43
Traffic deaths	12.7
Homicide rate	2
Political terror	2
Level of violent crime	3
Perceived criminality	3

● Albania

[Add country to compare](#)

Group by component

Group by indicator

Display scores

Display ranks

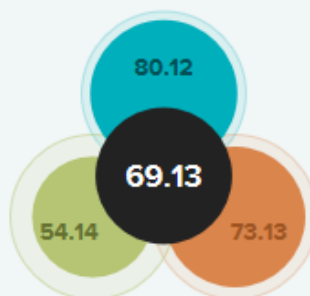
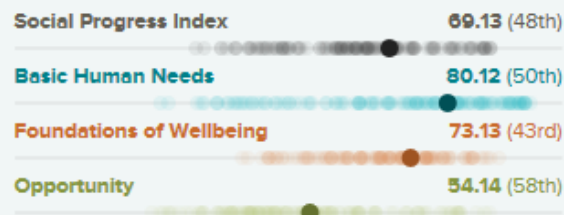
DYNAMICALLY GENERATED TEXT AND INFOGRAPHICS

ALBANIA

[Share](#)

Of issues covered by the Basic Human Needs Dimension, Albania does best in areas including **Nutrition and Basic Medical Care** and has the greatest opportunity to improve human wellbeing by focusing more on **Shelter**. Of issues covered by the Foundations of Wellbeing Dimension, Albania excels at providing building blocks for people's lives such as **Access to Basic Knowledge** but would benefit from greater investment in **Ecosystem Sustainability**. Of issues covered by the Opportunity Dimension, Albania outperforms in providing opportunities for people to improve their position in society and scores highly in **Personal Freedom and Choice** yet falls short in **Access to Advanced Education**.

Performance in Comparison



Census Data in Comparison



USING INDEX STRUCTURE AS NAVIGATION

SOCIAL PROGRESS INDEX 2014

[Share](#)

MEASURING NATIONAL PROGRESS – To truly advance social progress, we must learn to measure it, comprehensively and rigorously. The Social Progress Index offers a rich framework for measuring the multiple dimensions of social progress, benchmarking success, and catalyzing greater human wellbeing. The 2014 version of the Social Progress Index has improved upon the 2013 ‘beta’ version through generous feedback from many observers. We continue to welcome your use and testing of our data, and feedback to help us continue to improve. [Please watch our short video on the results of the Social Progress Index 2014.](#) [Please find our publications here.](#)



REGULARLY UPDATED BLOG TO PROMOTE RETURN VISITS

Highlighted Articles

#Progresso Social Brasil Presents IPS Amazonia to the Brazilian Government

15 Sep 2014, Jonathan Talbot



[Read more](#)

Get Involved

2014 is a watershed year for the Social Progress Imperative and the Social Progress Index as we expand to cover 132 countries and Social Progress Networks are already at work in several countries.

With your help, we can rapidly expand this conversation to reach a critical mass of interested and qualified parties looking to bring the same rigor to social and environmental progress as to economic growth and business competitiveness. We look forward to hearing from you.

[Contact us](#)

Latest Publications

Social Progress Index for the Brazilian Amazon 2014 - Executive Summary English

23 Aug 2014

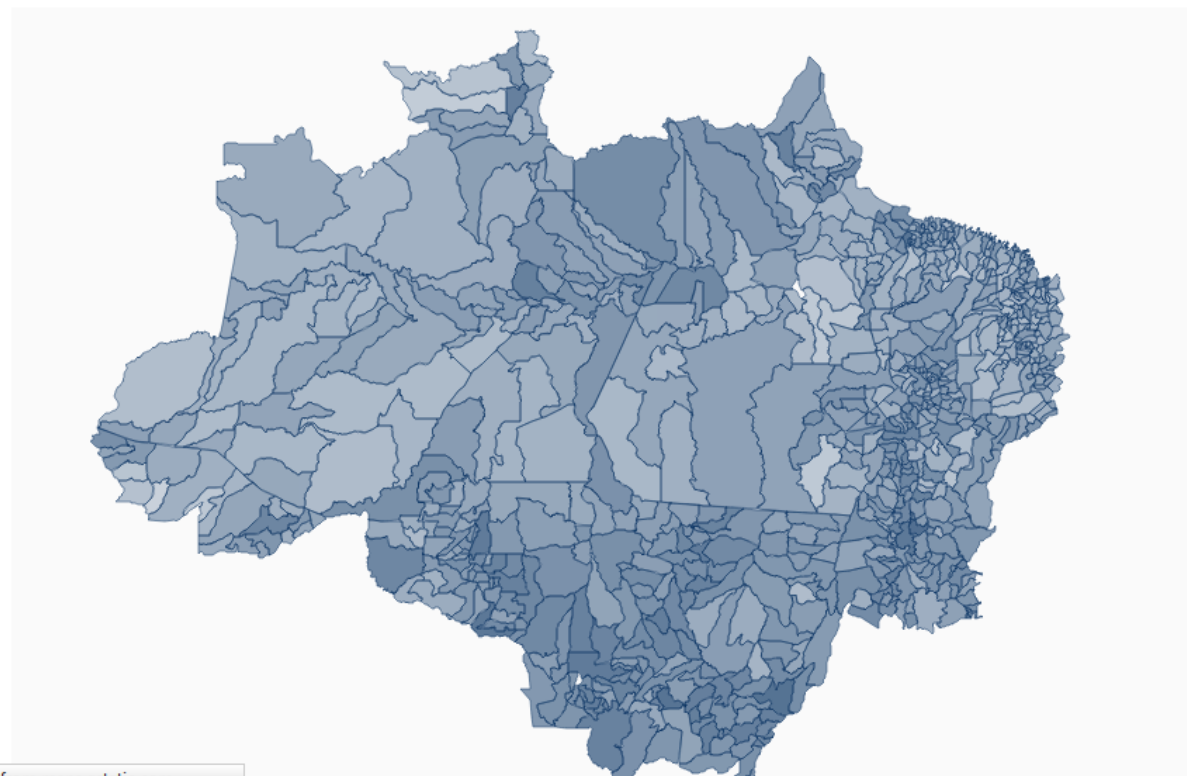
[Click to open pdf](#)

ASKING FOR INTENSE ENGAGEMENT – CREATING PARTNERSHIPS AND NEW INDICES



SUBNATIONAL INDEX MAP VIEW – DIMENSION VIEW

Localize no mapa uma cidade ou estado e escolha uma das três dimensões para obter informações sobre o progresso social.



↻ Exportar

</> Embed

● Índice de Progresso Social

● Necessidades humanas básicas

● Fundamentos para o bem-estar

● Oportunidades

Ver por município

Ver por estado

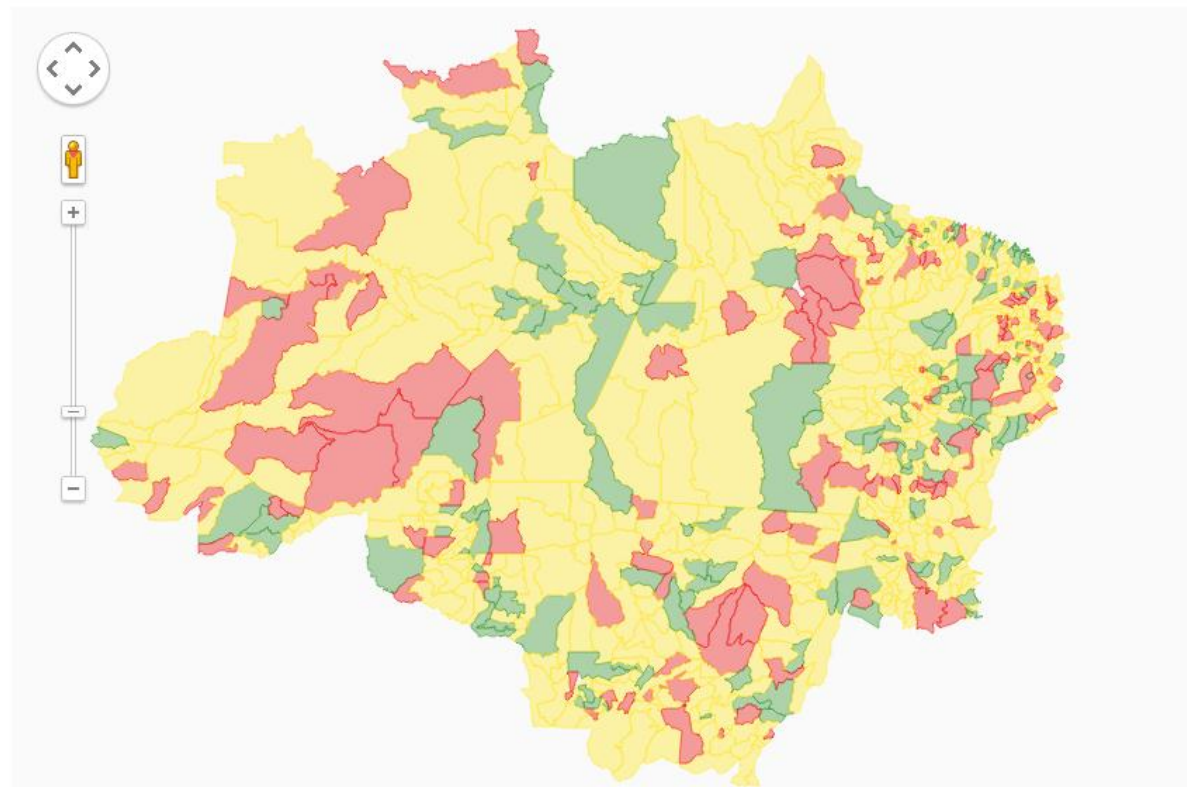
Mostrar desempenho

Mostrar scorecard

Transferring data from map-artistic.com

SUBNATIONAL INDEX MAP VIEW – SCORECARD DATA

Localize no mapa uma cidade ou estado e escolha uma das três dimensões para obter informações sobre o progresso social.



Exportar

</> Embed

Índice de Progresso Social

Necessidades humanas básicas

Fundamentos para o bem-estar

Oportunidades

Ver por município

Ver por estado

Mostrar desempenho

Mostrar scorecard

Relativamente FORTE

Relativamente NEUTRO

Relativamente FRACO

Dados indisponíveis

SCORECARD VIEW – IPS AMAZONIA MUNICIPALITY

Índice de Progresso Social

63,03

Necessidades humanas básicas

68,89

Nutrição e Cuidados Médicos Básicos

76,50

Subnutrição



Mortalidade por desnutrição



Mortalidade materna



Mortalidade Infantil até 5 anos



Mortalidade por HIV, dengue, tuberculose e malária



Água e Saneamento

45,60

Abastecimento de água



Esgotamento sanitário



Saneamento rural



Moradia

71,10

Moradia Inadequada



Acesso a energia elétrica



Coleta de lixo



Segurança Pessoal

81,60

Homicídios



Mortes por acidente no trânsito



Assassinatos de jovens



Fundamentos para o bem-estar

71,01

Acesso ao conhecimento básico

64,20

Analfabetismo



Acesso ao ensino médio



Qualidade da educação



Acesso ao ensino fundamental



Acesso à informação e comunicação

51,32

Conexão de voz



Conexão de dados de Internet móvel



Saúde e bem-estar

73,84

Mortalidade por doenças crônicas



Expectativa de vida ao nascer



Obesidade



Mortalidade por doenças respiratórias



Suicídio



Sustentabilidade dos ecossistemas

94,64

Desmatamento recente



Áreas degradadas



Desperdício de água



Desmatamento acumulado



Áreas protegidas



Oportunidades

49,38

Direitos individuais

41,89

Diversidade partidária



Mobilidade urbana



Pessoas ameaçadas



Liberdade individual e de escolha

68,48

Trabalho Infantil



Gravidez na Infância e adolescência



Vulnerabilidade familiar



Acesso a cultura, esporte e lazer



Tolerância e inclusão

68,37

Violência contra a mulher



Violência contra Indígenas



Desigualdade racial na educação



Acesso à educação superior

18,78

Pessoas com ensino superior



Educação feminina



Frequência ao ensino superior



SCORECARD VIEW – IPS AMAZONIA MUNICIPALITY- PRINT

Índice de Progresso Social: 51,90 667
Renda *per capita* anual 2010: R\$ 2.847 552

Barcelos



	Pontuação	Classificação	
Necessidades Humanas Básicas	52,04	639	
Nutrição e cuidados médicos básicos	74,52	358	
Subnutrição			
Mortalidade por desnutrição			
Mortalidade materna			
Mortalidade infantil até 5 anos			
Mortalidade por doenças infecciosas			
Água e saneamento	27,18	556	
Abastecimento de água			
Esgotamento sanitário			
Saneamento rural			
Moradia	54,86	665	
Moradia inadequada			
Acesso à energia elétrica			
Coleta de lixo			
Segurança pessoal	51,59	400	
Homicídios			
Mortes por acidente no trânsito			
Assassinatos de jovens			

	Pontuação	Classificação	
Fundamentos para o Bem-Estar	59,59	571	
Acesso ao conhecimento básico	41,89	767	
Analfabetismo			
Acesso ao ensino médio			
Qualidade da educação			
Acesso ao ensino fundamental			
Acesso à informação e comunicação	39,17	473	
Conexão de voz			
Conexão de dados de internet móvel			
Saúde e bem-estar	67,37	599	
Mortalidade por doenças crônicas			
Expectativa de vida ao nascer			
Obesidade			
Mortalidade por doenças respiratórias			
Suicídio			
Sustentabilidade dos ecossistemas	89,90	38	
Desmatamento recente			
Áreas degradadas			
Desperdício de água			
Desmatamento acumulado			
Áreas Protegidas			

	Pontuação	Classificação	
Oportunidades	44,07	600	
Direitos individuais	40,68	609	
Diversidade partidária			
Mobilidade urbana			
Pessoas ameaçadas			
Liberdade individual e de escolha	58,90	568	
Trabalho infantil			
Gravidez na infância e adolescência			
Vulnerabilidade familiar			
Acesso à cultura, esporte e lazer			
Tolerância e inclusão	64,07	457	
Violência contra a mulher			
Violência contra indígenas			
Desigualdade racial na educação			
Acesso à educação superior	12,63	671	
Pessoas com ensino superior			
Educação feminina			
Frequência ao ensino superior			

- Relativamente FORTE
- Relativamente NEUTRO
- Relativamente FRACO

Grupo de municípios com mesma faixa de renda *per capita*:

Rurópolis, Cachoeirinha, Belterra, Juruti, Santo Antônio dos Lopes, Codajás, Maracáçumé, Paulo Ramos, Sampaio, Mirinzal, Silves, Governador Archer, Coroatá, Bernardo do Mearim, Caapiranga, Lagoa do Tocantins, Poção de Pedras, Carrasco Bonito, Peixe-Boi, Itupiranga, Muricilândia, Curuçá, Sambaíba, Maurilândia do Tocantins, Gonçalves Dias, Goiatins, Nova Olinda do Norte.



**SOCIAL
PROGRESS
IMPERATIVE** **#PROGRESSO
SOCIAL
BRASIL**

* Para mais informações sobre o IPS, seu método de cálculo e ver a definição, unidade e fonte dos indicadores utilizados, leia o relatório "Índice de Progresso Social na Amazônia Brasileira - IPS Amazônia 2014", que está disponível nos sites www.imazon.org.br e www.progressosocial.org.br.

SOCIAL PROGRESS INDEX AT THE CITY LEVEL

Red de Ciudades Cómo Vamos



El exitoso modelo de evaluación realizado por Bogotá Cómo Vamos ha sido replicado en diferentes ciudades de Colombia y Latinoamérica. Conoce estas experiencias y los impactos que han tenido en la calidad de vida local.

Concejo >

VISUAL SURVEY MAPPING AT THE HOUSEHOLD LEVEL - PARAGUAY



THE FUTURE IS MULTI-SCALAR – BUT HOW TO PRESENT IT ALL?

City Level

- Ongoing work with Avina, the office of the Mayor of Bogota and the Presidential office to create a Social Progress Sub-Index for Bogota.

National

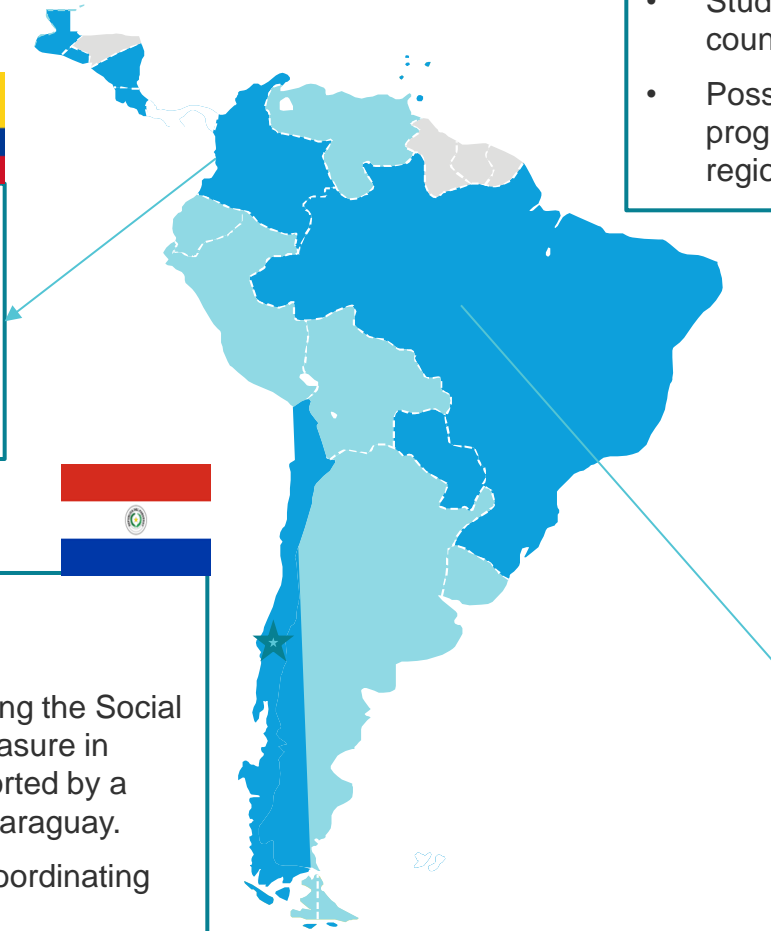
- The Government of Paraguay is integrating the Social Progress Index as a key performance measure in national development plan to 2030, supported by a cross-sectoral Social Progress Network Paraguay.
- Deloitte Paraguay is part of a National Coordinating Committee which manages the network

Multi-Nation Regional

- Study of migration across several countries in Latin America
- Possible EU-wide project on social progress at level of subnational regions

Subnational Regional

- Leading businesses and civil society organizations in Brazil are creating a municipal-level Social Progress Index for c.800 municipalities in the Amazon region to align interventions and influence government development policy.



MEDIA AND SOCIAL MEDIA CAMPAIGNS WITH SPONSORS AND PARTNERS DRIVE TRAFFIC TO OUR WEBSITES



Guardian Sustainable Business

Ideas and insight for sustainable business leaders



Which country should you live in?



What if you could find the perfect country to live in based on the factors that you deem most important? Well, now you can, using data provided by the Social Progress Imperative's 2014 Social Progress Index, which examined 132 countries' progress in delivering social and environmental value in three areas: **Basic Human Needs**, **Foundation of Wellbeing** and **Opportunity**. Click or tap the arrow below to begin ...



Basic Human Needs



Foundation of Wellbeing



Opportunity

Building relationships with key media is crucial.

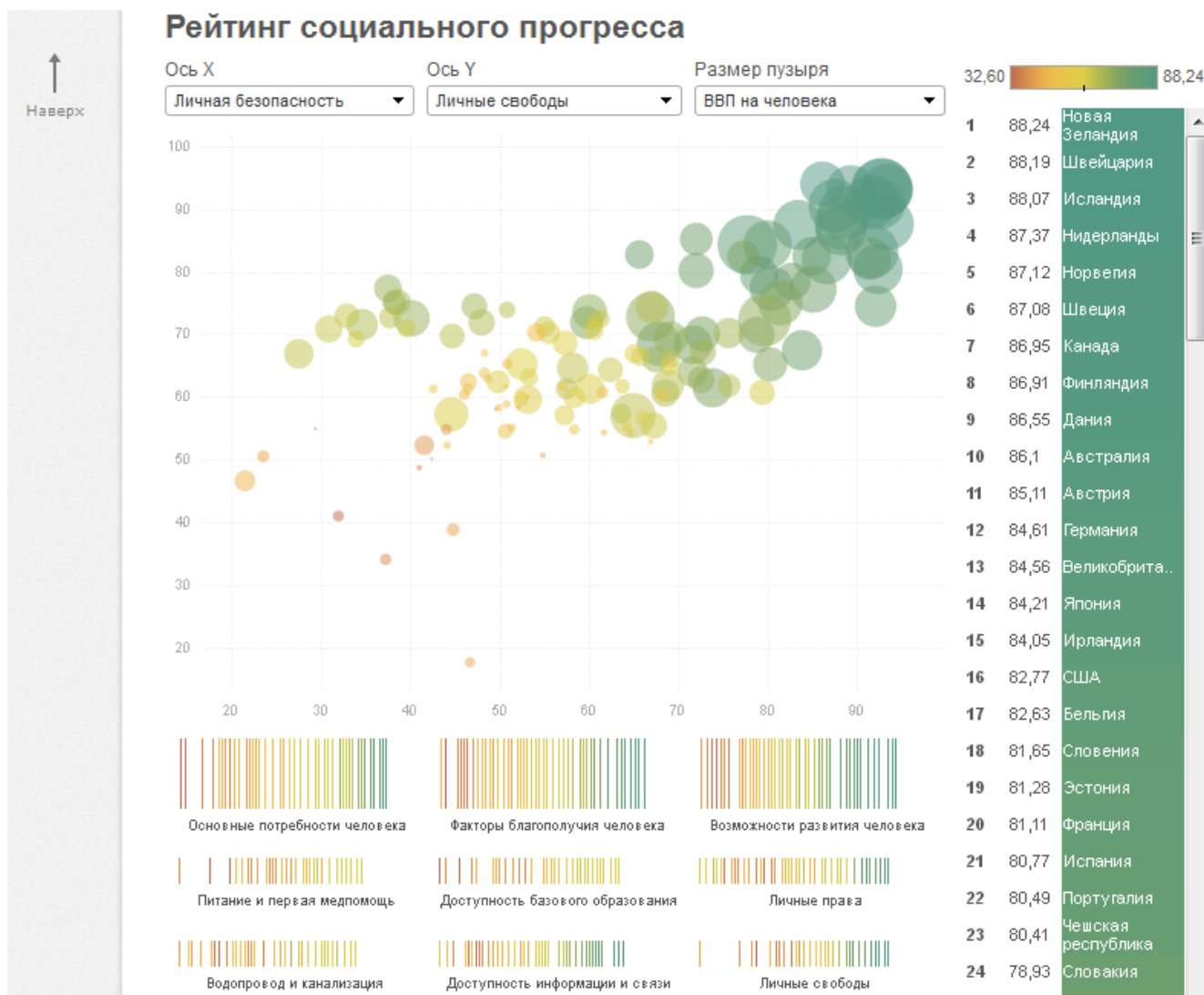
The deeper the interaction with the data, the greater the potential for amplification.

Guardian Sustainable Business campaign provided a new way of interacting with SPI 2014 data.

HOW WE MAKE IT SHAREABLE

- Main interactive for global Social Progress Index is embeddable on any HTML page – and now available in English, Spanish, and Portuguese
- Any state of the visualization is shareable as a URL
- Same for IPS Amazonia
- Social media share buttons on site
- Dataset and raw values available in one file as a download
- API for global index coming later this year

DATA ALREADY BEING USED BY 3RD PARTIES



FUTURE IMPROVEMENTS

- Mobile versioning (mobile site + app)
- Slow connections
- Tell stories connected to the data
- Language versioning
- Broaden use potential of dataset and raw data

LESSONS LEARNED

- Media (traditional and social) seems to drive the bulk of web traffic
- Build sites with measurement of user preferences in mind
- Difficult to create dynamic interactives that are as visually dense as static images that work well
- Public seems most interested in national-level data so far
- Define specific audiences and interactions when building interactives (or working with media) – it is difficult to change your static frameworks “on the fly”



**SOCIAL
PROGRESS
IMPERATIVE.org**