



Crowdsourcing and Government

Best Practices, Lessons and Challenges

Vyron Antoniou

Research Team



- Prof. **Mordechai (Muki) Haklay**, Department of Civil, Environmental and Geomatic Engineering, UCL
- Dr. **Vyron Antoniou**, Hellenic Army Geographic Directorate
- **Sofia Basiouka**, School of Rural and Surveying Engineering, National Technical University of Athens
- **Robert Soden**, World Bank, Global Facility for Disaster Reduction & Recovery (GFDRR)
- Dr. **Peter Mooney**, Department of Computer Science, National University of Ireland, Maynooth

Project Background

- Crowdsourcing GI maturing
(OpenStreetMap 2004, TomTom Map Share 2007, Google Map Maker 2008, Waze 2008)
- Quality demonstrated to be 'good enough' and 'fit for purpose'
- GFDRR (and other funders) sponsor VGI
- Open questions:
 - How to ensure that projects are successful?*
 - What are the barriers?*
 - Opportunities?*

Scope

- Public to Government.
 - Government to Public to Government
 - Public to Government to Public.
- 

Methodology

- Workshop at SOTM '13
- 7 seed-cases, website, survey
- Further 4 cases through experts
- Jan – May 2014:
Continued effort to identify cases, response to submissions
- May 2014 – Skype workshop and write up
- Total 29 cases, over 35 identified

Crowdsourcing and Government

...about governmental projects that incorporate crowdsourced data.

[Home](#) [Case Studies](#) [The Report – Analysis of case studies](#) [The Research Team](#) [GFDRL & UCL collaboration](#)



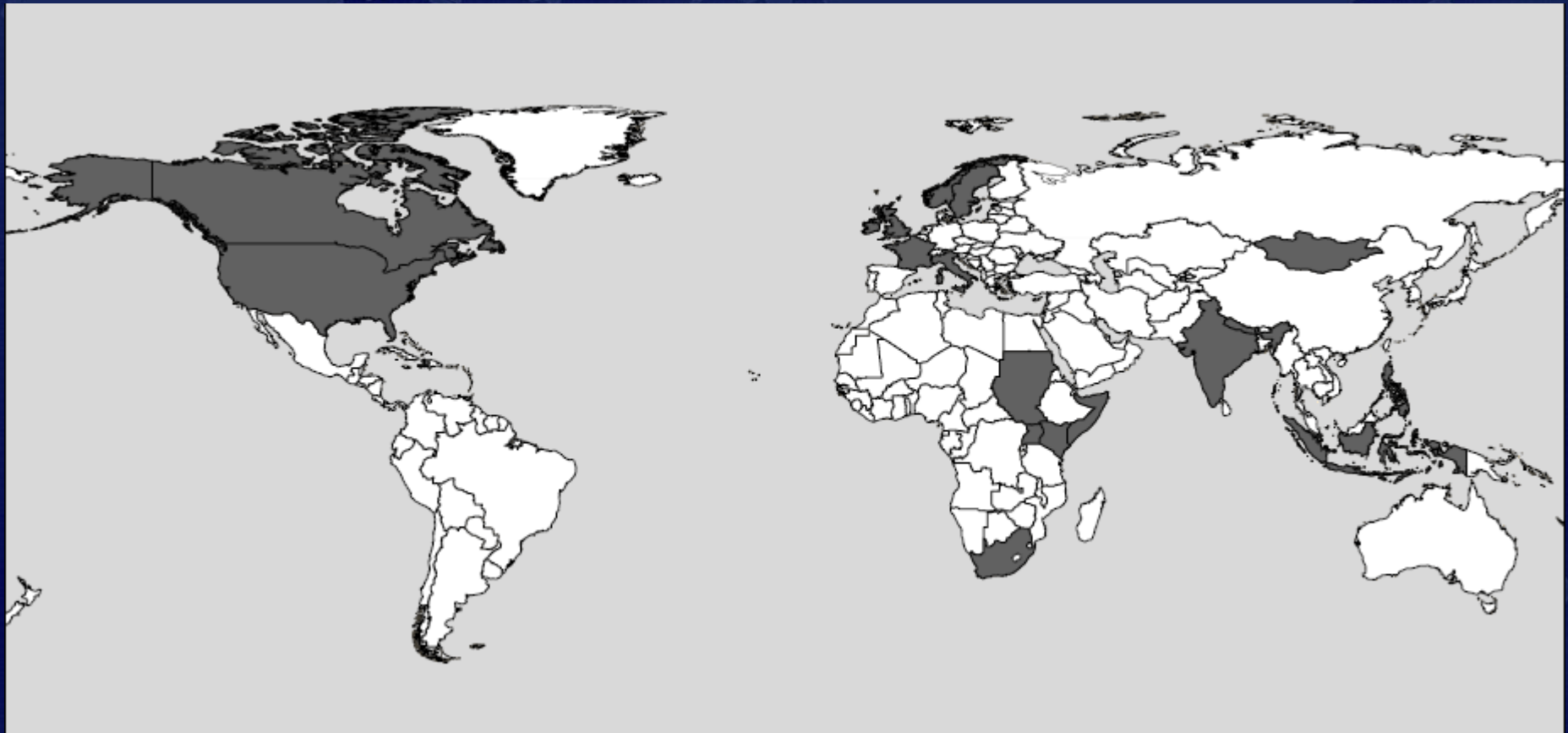
FixMyStreet

Interaction type	Public → Government
Trigger Event	-
Domain	Local authority/municipality maintenance
Organisation	MySociety (originally developed with central government funding)
Data sets in use	Originally, the website used government datasets: postcodes, basemap, local authorities boundaries, contact details and email addresses of relevant personnel in local authorities.
Process	An indication of a problem on a website, through the use of a postcode where the problem occur, create an email that alerts the local authority to the problem. The authority can respond to the complaint on the website.

Table of Content

Introduction
The Research Team
US National Park Service – Places Project
Case Studies
Boston StreetBump
Natural Resources Canada-OpenStreetMap Synergy
FixMyStreet
Use of Corine Land Cover in OpenStreetMap in France
Haiti Disaster Response
Community Mapping for Exposure in Indonesia
New York City Open Data Initiative
State Department HIU – Imagery to the Crowd
Vernacular Place Names by OS and UK Coastguard
California Roadkill Observation System (CROS)
USGS 'Did you feel it?'

Case Studies



Analysis

1. Incentives/drivers to start a project, mostly from the government perspective
2. Scope and aims
3. Participants, stakeholders and relationships, identifying the roles that different participants play
4. Modes of engagement
5. Technical aspects
6. Success factors
7. Problems encountered

Analysis

1. Incentives/drivers to start a project, mostly from the government perspective
2. Scope and aims
3. Participants, stakeholders and relationships, identifying the roles that different participants play
4. Modes of engagement
5. Technical aspects
6. Success factors
7. Problems encountered

Incentives/drivers

- Lack of institutional data in time sensitive situations
(*Haiti earthquake disaster response, Mapping schools and health facilities in Kathmandu Valley*)
- Policy change around governmental data
(*New York City Open Data, French Corine Land Cover in OSM, US State Department “Imagery to the Crowd” policy*)
- Low resources and need for infrastructure support
(*Canadian National Mapping Agency (NMA), “Smart City” project in Ulaanbaatar, Mongolia*)
- Research and development efforts
(*CROS in California, Towns Conquer in Spain, FINTAN in UK*)
- Environmental monitoring through citizen science
(*USGS Did You Feel in US, Skandobs in Norway and the Swedish*)

Incentives/drivers

- Lack of institutional data in time sensitive situations
(Haiti earthquake disaster response, Mapping schools and health facilities in Kathmandu Valley)
- Policy change around governmental data
(New York City Open Data, French Corine Land Cover in OSM, US State Department “Imagery to the Crowd” policy)
- Low resources and need for infrastructure support
(Canadian National Mapping Agency (NMA), “Smart City” project in Ulaanbaatar, Mongolia)
- Research and development efforts
(CROS in California, Towns Conquer in Spain, FINTAN in UK)
- Environmental monitoring through citizen science
(USGS Did You Feel in US, Skandobs in Norway and the Swedish)

Incentives/drivers

- Lack of institutional data in time sensitive situations
(Haiti earthquake disaster response, Mapping schools and health facilities in Kathmandu Valley)
- Policy change around governmental data
(New York City Open Data, French Corine Land Cover in OSM, US State Department “Imagery to the Crowd” policy)
- Low resources and need for infrastructure support
(Canadian National Mapping Agency (NMA), “Smart City” project in Ulaanbaatar, Mongolia)
- Research and development efforts
(CROS in California, Towns Conquer in Spain, FINTAN in UK)
- Environmental monitoring through citizen science
(USGS Did You Feel in US, Skandobs in Norway and the Swedish)

Incentives/drivers

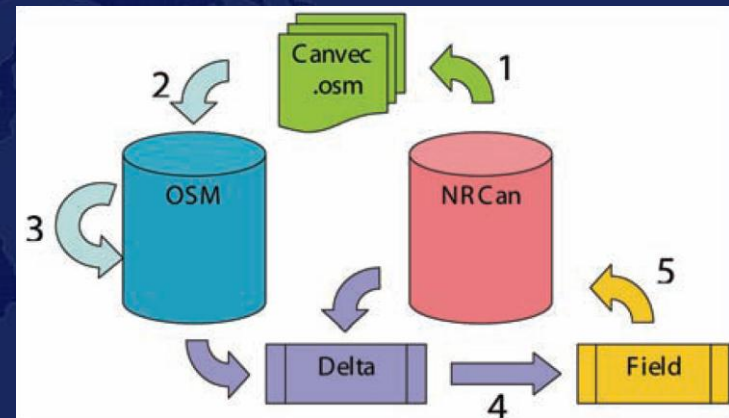
- Lack of institutional data in time sensitive situations
(Haiti earthquake disaster response, Mapping schools and health facilities in Kathmandu Valley)
- Policy change around governmental data
(New York City Open Data, French Corine Land Cover in OSM, US State Department “Imagery to the Crowd” policy)
- Low resources and need for infrastructure support
(Canadian National Mapping Agency (NMA), “Smart City” project in Ulaanbaatar, Mongolia)
- Research and development efforts
*(CROS in **California**, Towns Conquer in **Spain**, FINTAN in **UK**)*
- Environmental monitoring through citizen science
(USGS Did You Feel in US, Skandobs in Norway and the Swedish)

Incentives/drivers

- Lack of institutional data in time sensitive situations
(Haiti earthquake disaster response, Mapping schools and health facilities in Kathmandu Valley)
- Policy change around governmental data
(New York City Open Data, French Corine Land Cover in OSM, US State Department “Imagery to the Crowd” policy)
- Low resources and need for infrastructure support
(Canadian National Mapping Agency (NMA), “Smart City” project in Ulaanbaatar, Mongolia)
- Research and development efforts
(CROS in California, Towns Conquer in Spain, FINTAN in UK)
- Environmental monitoring through citizen science
*(USGS Did You Feel in **US**, Skandobs in **Norway** and the **Swedish**)*

Success factors

- Identification of appropriate cooperation between the public and government
- Partnership of scientific organizations
- Recruitment of volunteers
- Workshops
- Innovative techniques



Natural Resources
Canada

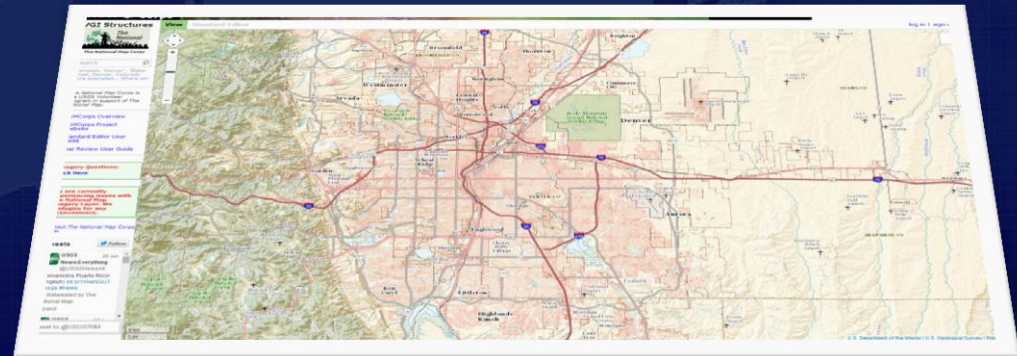
Ressources naturelles
Canada

Canada



Success factors

- Identification of appropriate cooperation between the public and government
- Partnership of scientific organizations
- Recruitment of volunteers
- Workshops
- Innovative techniques



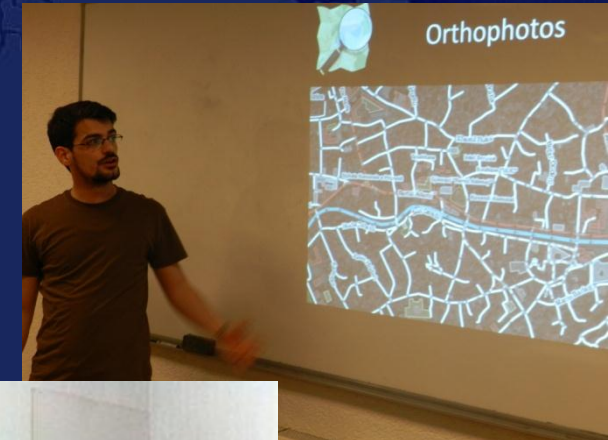
Success factors

- Identification of appropriate cooperation between the public and government
- Partnership of scientific organizations
- Recruitment of volunteers
- Workshops
- Innovative techniques



Success factors

- Identification of appropriate cooperation between the public and government
- Partnership of scientific organizations
- Recruitment of volunteers
- **Workshops**
- Innovative techniques



Success factors

- Identification of appropriate cooperation between the public and government
- Partnership of scientific organizations
- Recruitment of volunteers
- Workshops
- Innovative techniques



Problems Encountered

- One-off event versus on-going initiative
- Accuracy and reliability
- Maintaining public interest



Problems Encountered

- One-off event versus on-going initiative
- Accuracy and reliability
- Maintaining public interest



Problems Encountered

- One-off event versus on-going initiative
- Accuracy and reliability
- Maintaining public interest



Challenges that need to be addressed

**Traditional
practices and
concern over
organizational
change**

**Project
continuation
and
sustainability**

**Separation
between data
collection and
use for policy
analysis**

**Licensing and
other
Intellectual
Property Rights
(IPR)**

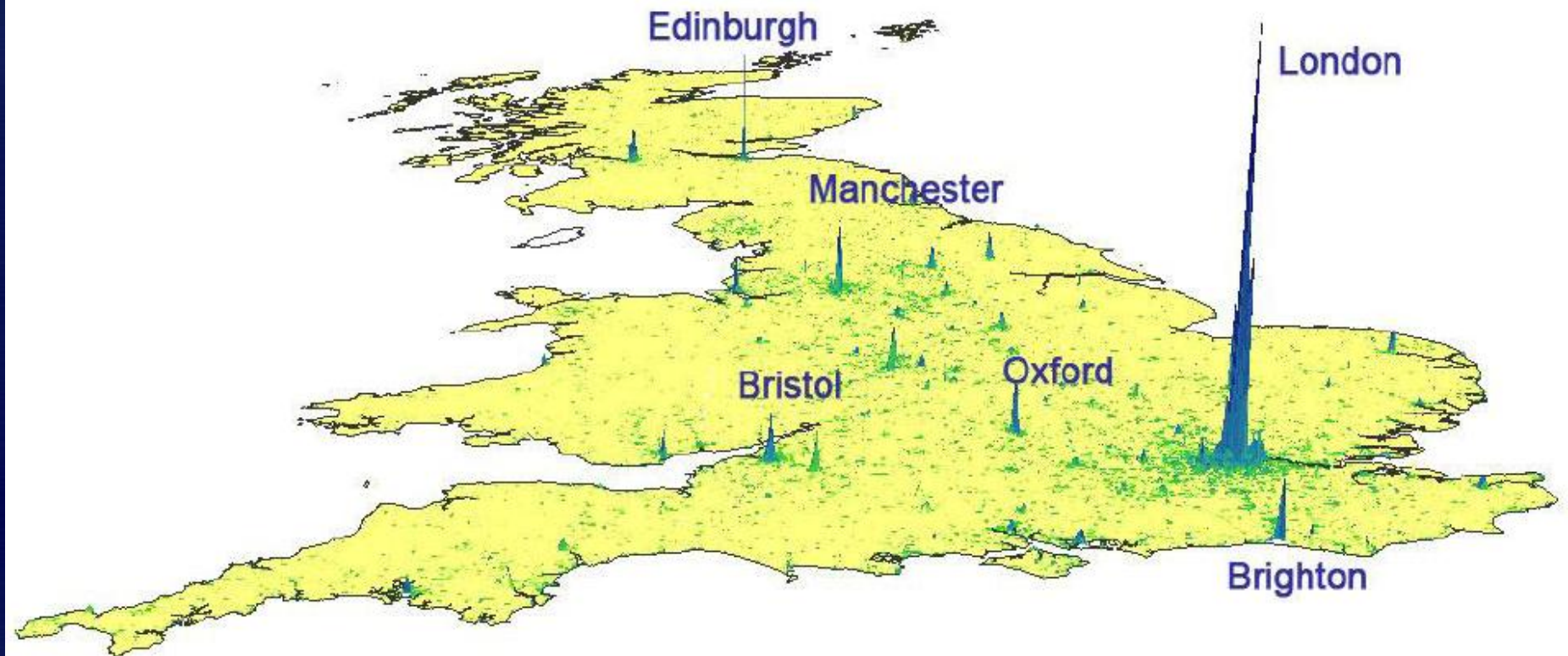
**Contact
points**

**Conflict
between
channels of
reporting**

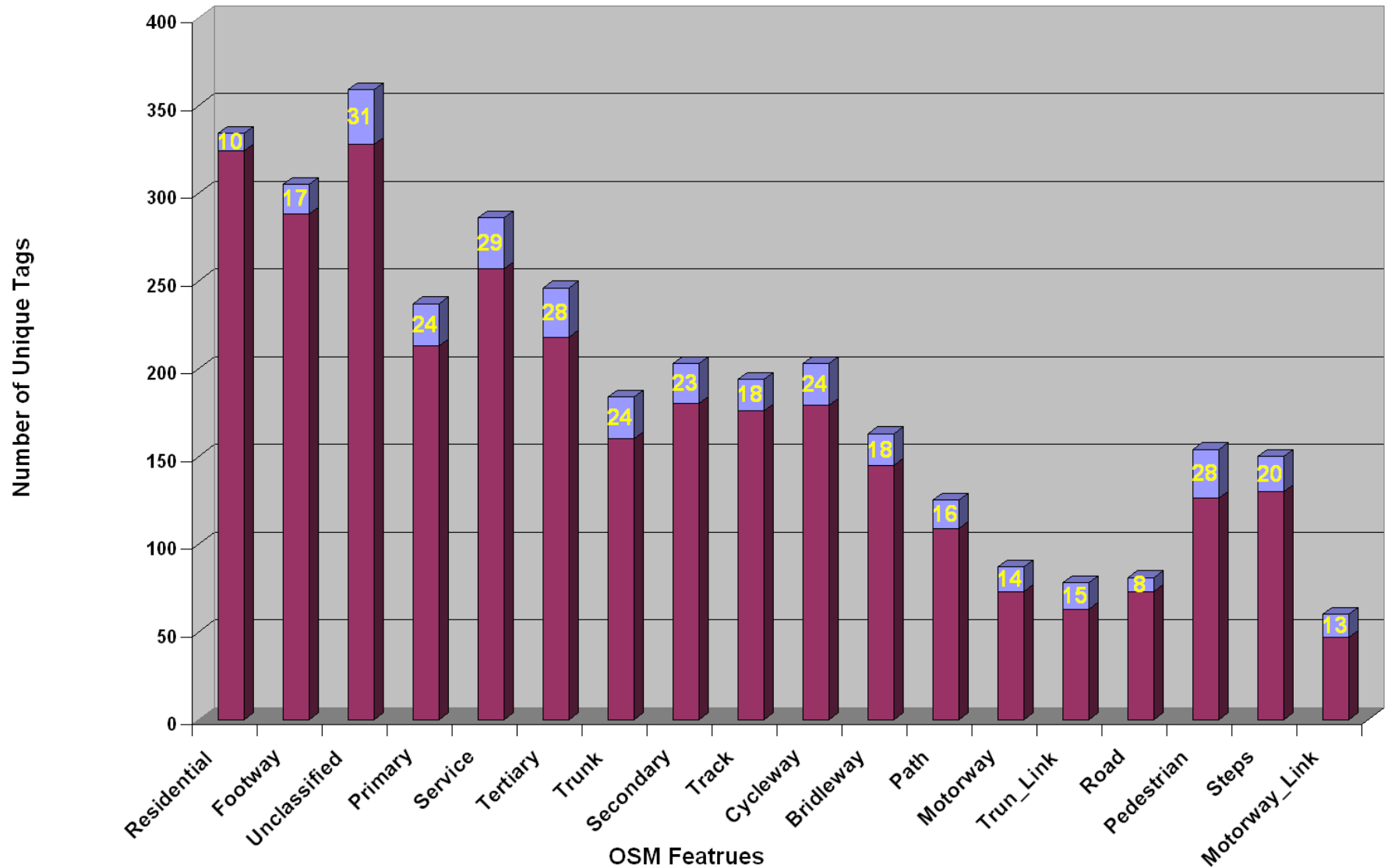
**Inherent
coverage,
temporal and
participation
biases**

Participation Patterns for geo-tagged photos

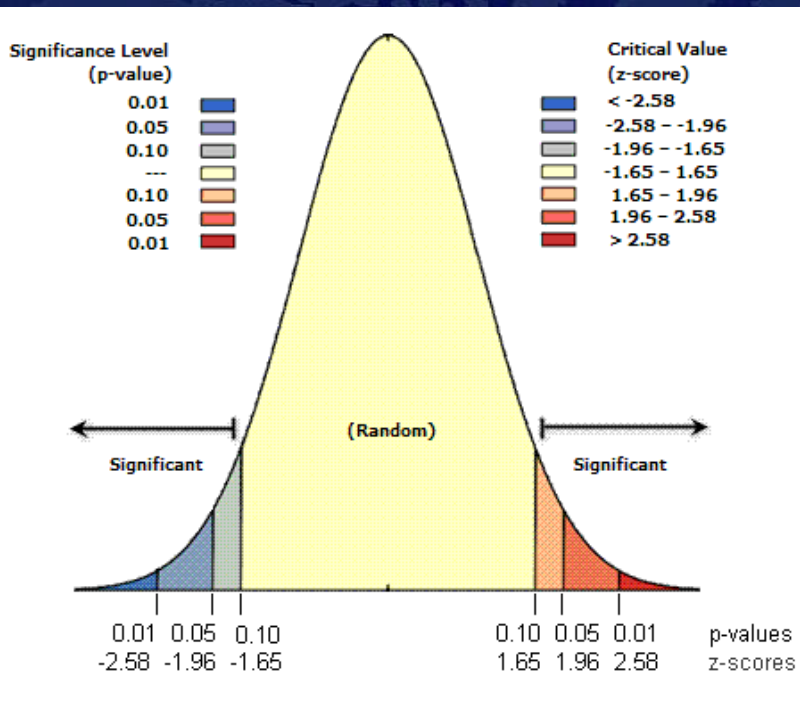
Flickr in 3D



Participation Patterns - OpenStreetMap



Participation Patterns in OSM



Hot-spot Analysis on the number of edits for each feature

Participation Patterns in Flickr and Geograph

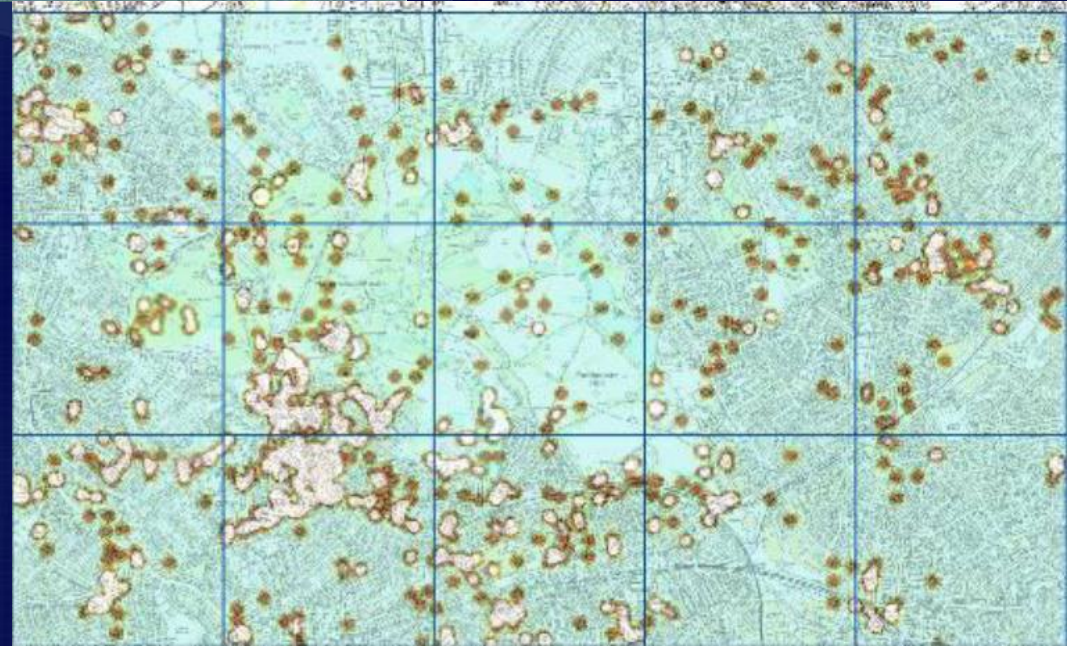
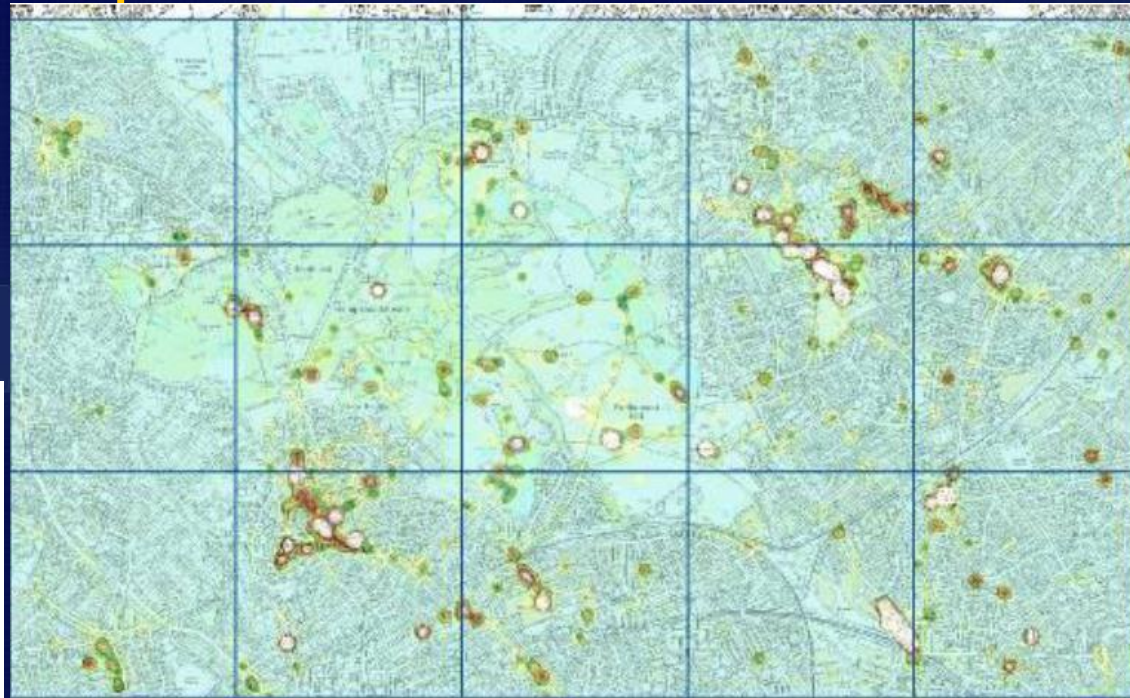
Flickr
(7993 photos)

High

Density Surfaces

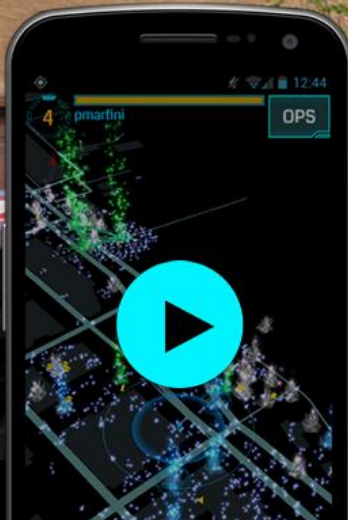
Low

Geograph
(1109 photos)



Gamification

The world around you
is not what it seems.



Ingress. The game.

It's happening all around you. They
aren't coming. They're already here.



2013. NianticLabs@G



Thank you!

Download the report:



<http://crowdgo.wordpress.com/report>

CROWDSOURCED GEOGRAPHIC INFORMATION USE IN GOVERNMENT

A report prepared for the World Bank
Global Facility for Disaster Reduction and Recovery



THE WORLD BANK



GFDRR

UCL

